

Research, development and training laboratory

219 rue Laszlo Biro – Archamps, France


Laboratory




- 4 work places
- 2 ceiling scialytics with integrated camera
- 4 movable scialytics
- 3 connected screens with registration and rebroadcast in the teaching room
- Connected mikes allowing exchanges between the laboratory and the teaching room

Touch[®] Training

2019 TOUCH[®]
CADAVERLAB PLANNING



TOUCH[®]
Dual mobility trapeziometacarpal prosthesis
Optimal Modularity: 120 possible combinations



5 stem models

Straight and 15° Offset necks
3 heights: 6, 8 and 10 mm

Conical cup
Ø 9 and 10 mm

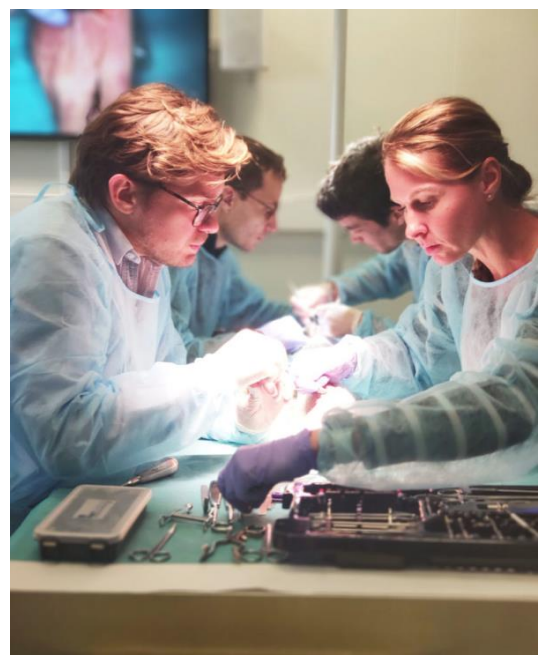
Spherical cup
Ø 9 and 10 mm

Fully committed to Hand & Wrist only

- Friday, January 18th
Archamps, France 
- Friday, January 25th
Archamps, France 
- Friday, February 8th
Archamps, France 
- Friday, March 1st
Archamps, France 
- Friday, March 15th
Archamps, France 
- Friday, April 12th
Archamps, France 
- Friday, May 24th
Archamps, France 
- Friday, June 14th
Archamps, France 
- Friday, June 28th
Archamps, France 
- Friday, July 5th
Archamps, France 
- Friday, September 20th
Archamps, France 
- Friday, October 18th
Archamps, France 
- Friday, December 13th
Geneva, Switzerland 

INFORMATION & REGISTRATION:


KeriMedical France
ActiPro - 219 rue Laszlo Biro - 74160 Archamps - info@kerimedical.com
Contact: Caroline Subit - caroline.subit@kerimedical.com - +41 79 897 99 04
Update: 2019/02/15




- Cadaverlab for the use of the trapeziometacarpal Touch[®] prosthesis
- One anatomical specimen per person
- International network of expert surgeons

Motec® Training

2019 MOTEC®
CADAVERLAB PLANNING



MOTEC®
Wrist Joint Prosthesis



Fully committed to Hand & Wrist only



Saturday, March 16th
Archamps, France 

Friday, April 12th
Archamps, France 

Friday, May 24th
Archamps, France 

Friday, June 14th
Archamps, France 

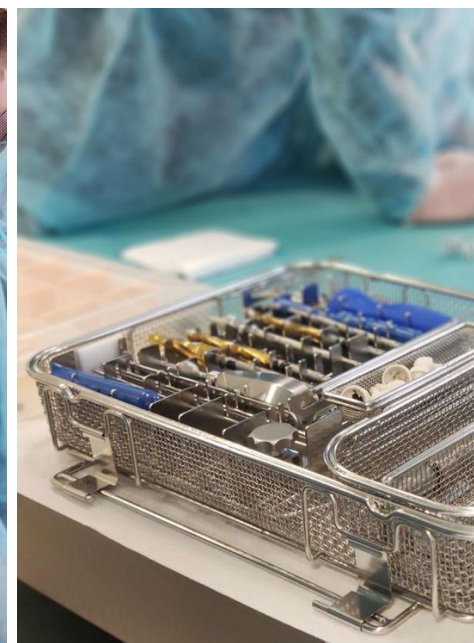
Friday, June 28th
Archamps, France 

Friday, September 20th
Archamps, France 

Friday, October 18th
Archamps, France 

INFORMATION & REGISTRATION:

KeriMedical France
ActiPro - 219 rue Laszlo Biro - 74160 Archamps - info@kerimedical.com
Contact: Caroline Subit - caroline.subit@kerimedical.com -
+41 79 897 99 04 Updated: 2019/04/04



- Cadaverlab for the use of the wrist prosthesis Motec®
- One anatomical specimen per person
- International network of expert surgeons

Teaching room



- Screens connected to the laboratory
- Mikes connected to the laboratory
- Min. 12 seats

Break room

