

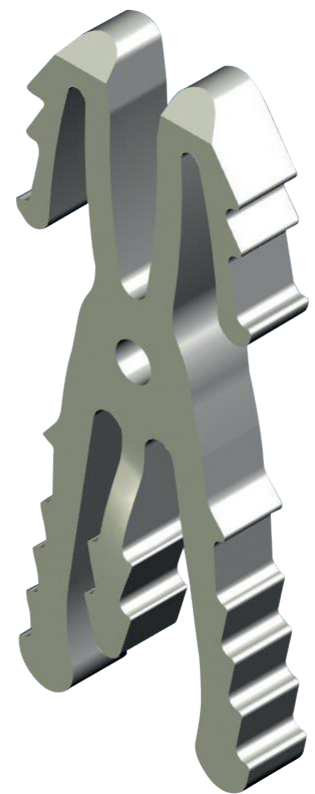


## KeriFuse<sup>®</sup>

Intramedullary Arthrodesis

Implant DIP / IP

0° / 15° / 25°



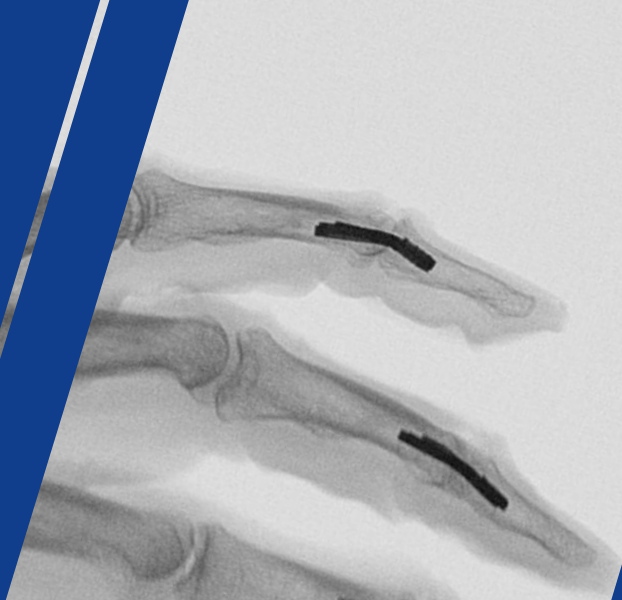
Fully committed to **Hand & Wrist** only

[www.kerimedical.com](http://www.kerimedical.com)

## Intramedullary Arthrodesis Implant DIP / IP thumb

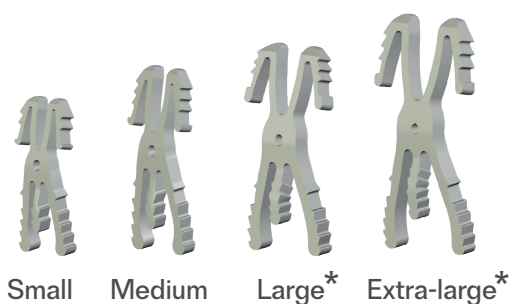
0° / 15° / 25°

Surgical treatment of DIP and IP thumb arthrosis by fusion



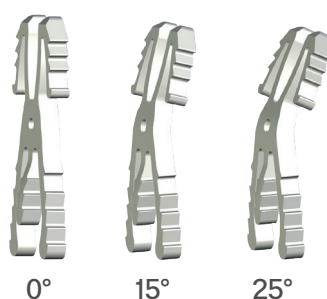
MODULARITY

### 4 SIZES



\* Size to be selected according to IP thumb characteristics

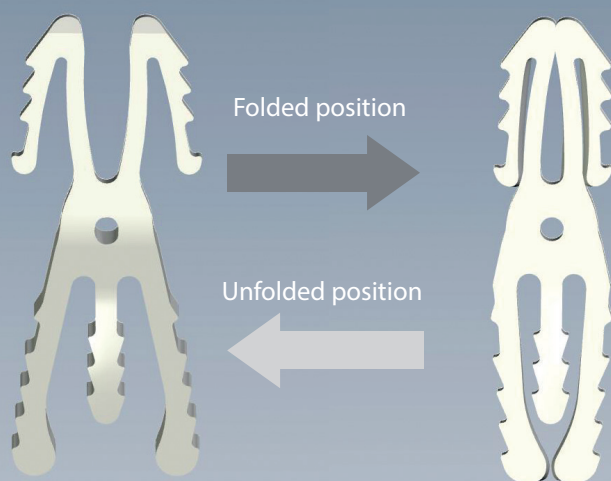
### 3 ANGULATIONS



FLEXIBILITY

## SUPER-ELASTIC SHAPE MEMORY IMPLANT (NiTi)

PRINCIPLES



- NiTi super-elastic
- Insertion with implant folded: preservation of the arthrodesis surfaces
- Deployment of the legs in the phalanges for optimal anchorage and stability

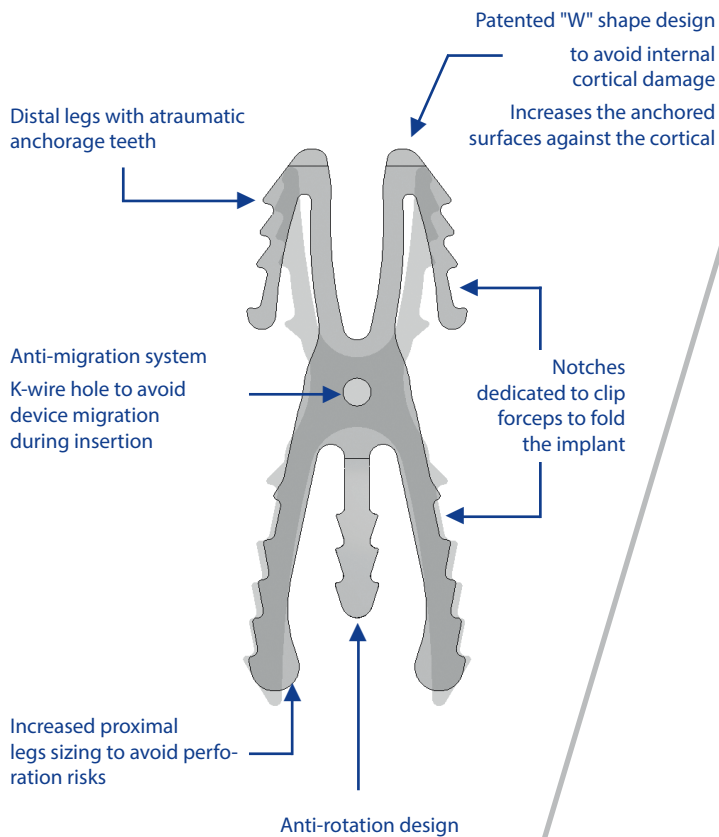
# KeriFuse®

## Ideal arthrodesis surgical solution

### KeriFuse® vs X-Fuse



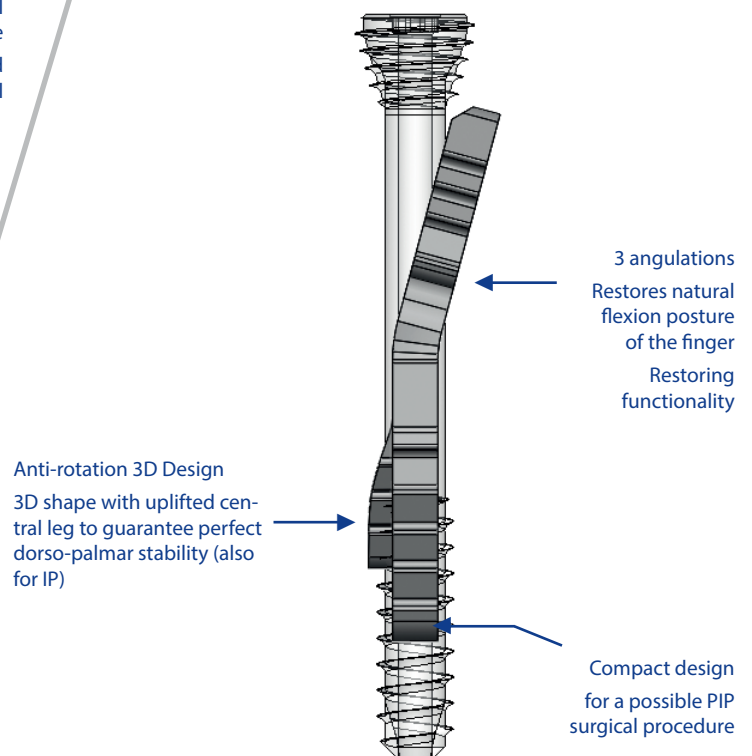
Perfectly designed for  
IP thumb fusion



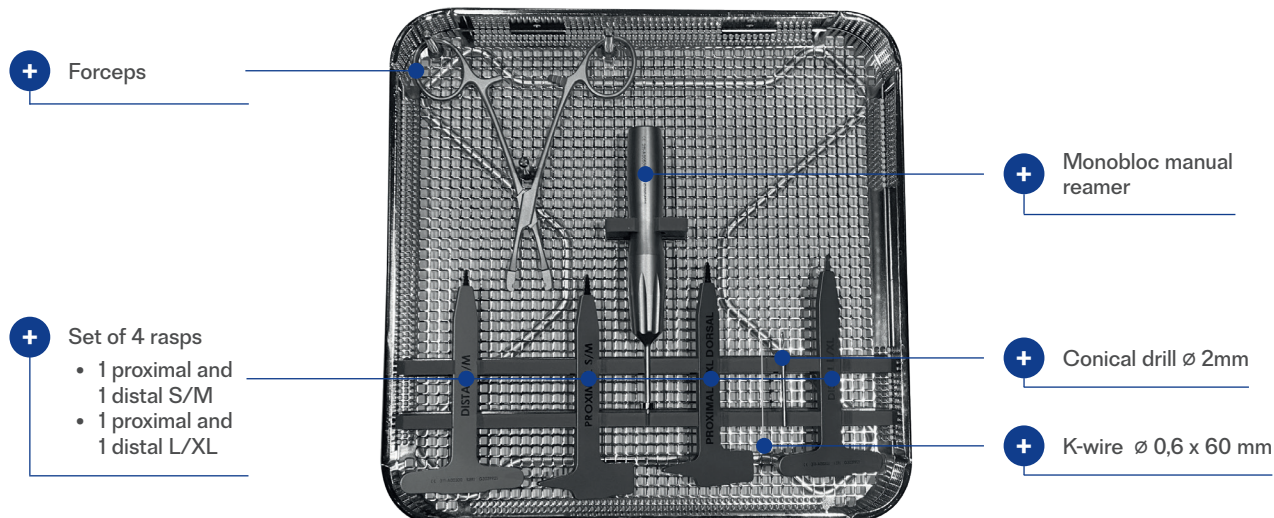
### KeriFuse® vs Compression screw



- Angulations 0°/15°/25°
- No pulp approach/incision







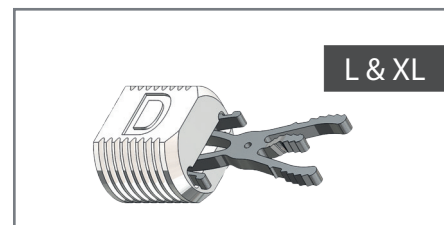
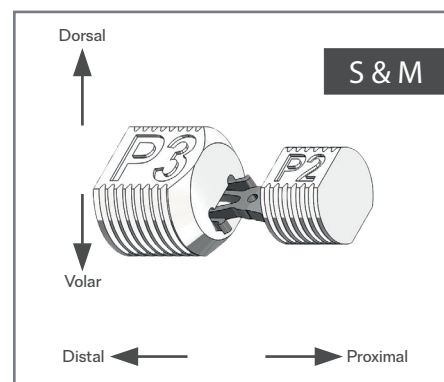
## ORDERING INFORMATION

### DIP / IP Implants

Catalog		
KeriFuse®	Reference	Designation
	Intramedullary Arthrodesis Implant - Small 0°	310-P20200
	Intramedullary Arthrodesis Implant - Small 15°	310-P20215
	Intramedullary Arthrodesis Implant - Small 25°	310-P20225
	Intramedullary Arthrodesis Implant - Medium 0°	310-P10100
	Intramedullary Arthrodesis Implant - Medium 15°	310-P10115
	Intramedullary Arthrodesis Implant - Medium 25°	310-P10125
	Intramedullary Arthrodesis Implant - Large 0°	310-P30300
	Intramedullary Arthrodesis Implant - Large 15°	310-P30315
	Intramedullary Arthrodesis Implant - Large 25°	310-P30325
	Intramedullary Arthrodesis Implant - Extra Large 0°	310-P40400
	Intramedullary Arthrodesis Implant - Extra Large 15°	310-P40415
	Intramedullary Arthrodesis Implant - Extra Large 25°	310-P40425

\* Size to be selected according to IP thumb characteristic

- + Sterile**
- + Ready-to-use**



**KeriMedical SA**  
**Switzerland** (Headquarters)  
 Route des Acacias, 45a  
 1227 Geneva - Switzerland  
 Tél: +41 58 255 01 30  
 Fax: +41 58 255 01 40  
 customerservice@kerimedical.com

**KeriMedical SAS**  
**France**  
 ActiPro - 219 rue Laszlo Biro  
 74160 Archamps - France  
 Tél: +33(0)4 50 85 36 10  
 Fax: +33 (0)4 80 16 05 10  
 adv@kerimedical.com

Distributed by :

