

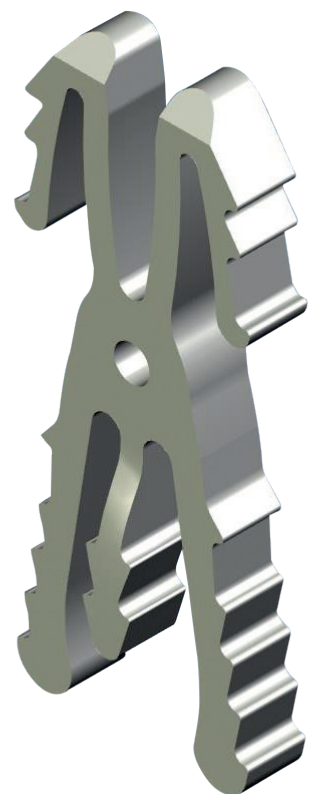


KeriFuse[®]

Intramedullary Arthrodesis

Implant DIP / IP

0° / 15° / 25°

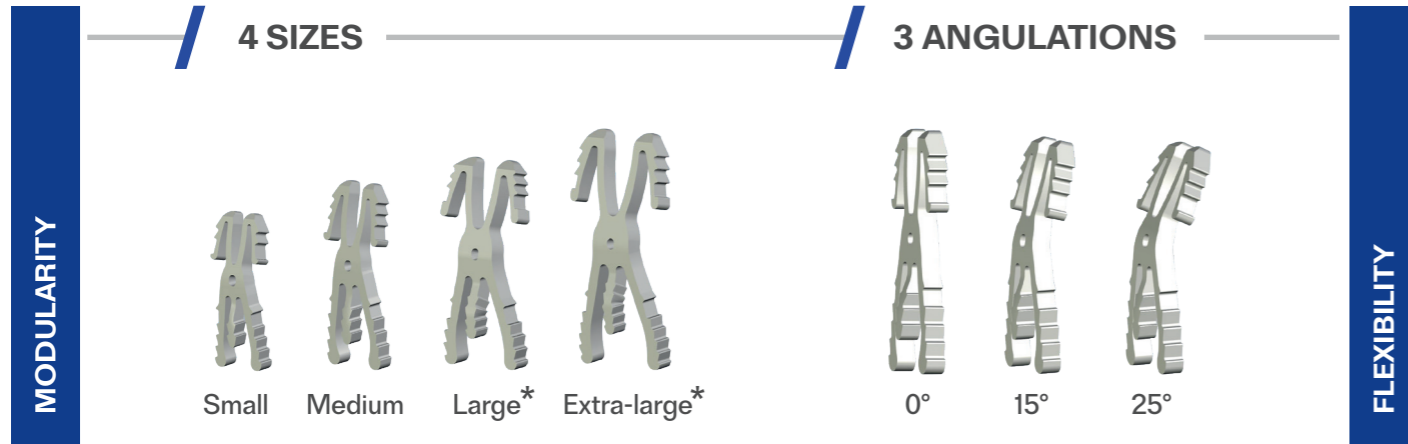


Fully committed to **Hand & Wrist** only

www.kerimedical.com

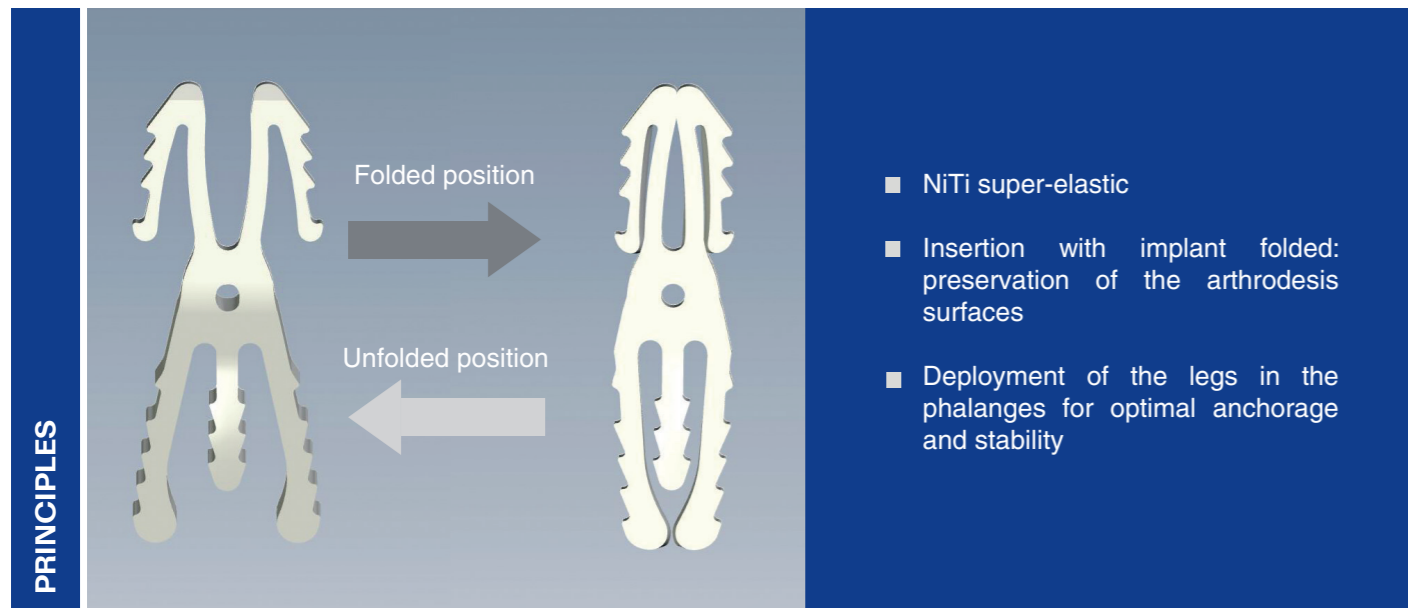


Ideal arthrodesis surgical solution



* Size to be selected according to IP thumb characteristics

SUPER-ELASTIC SHAPE MEMORY IMPLANT (NiTi)

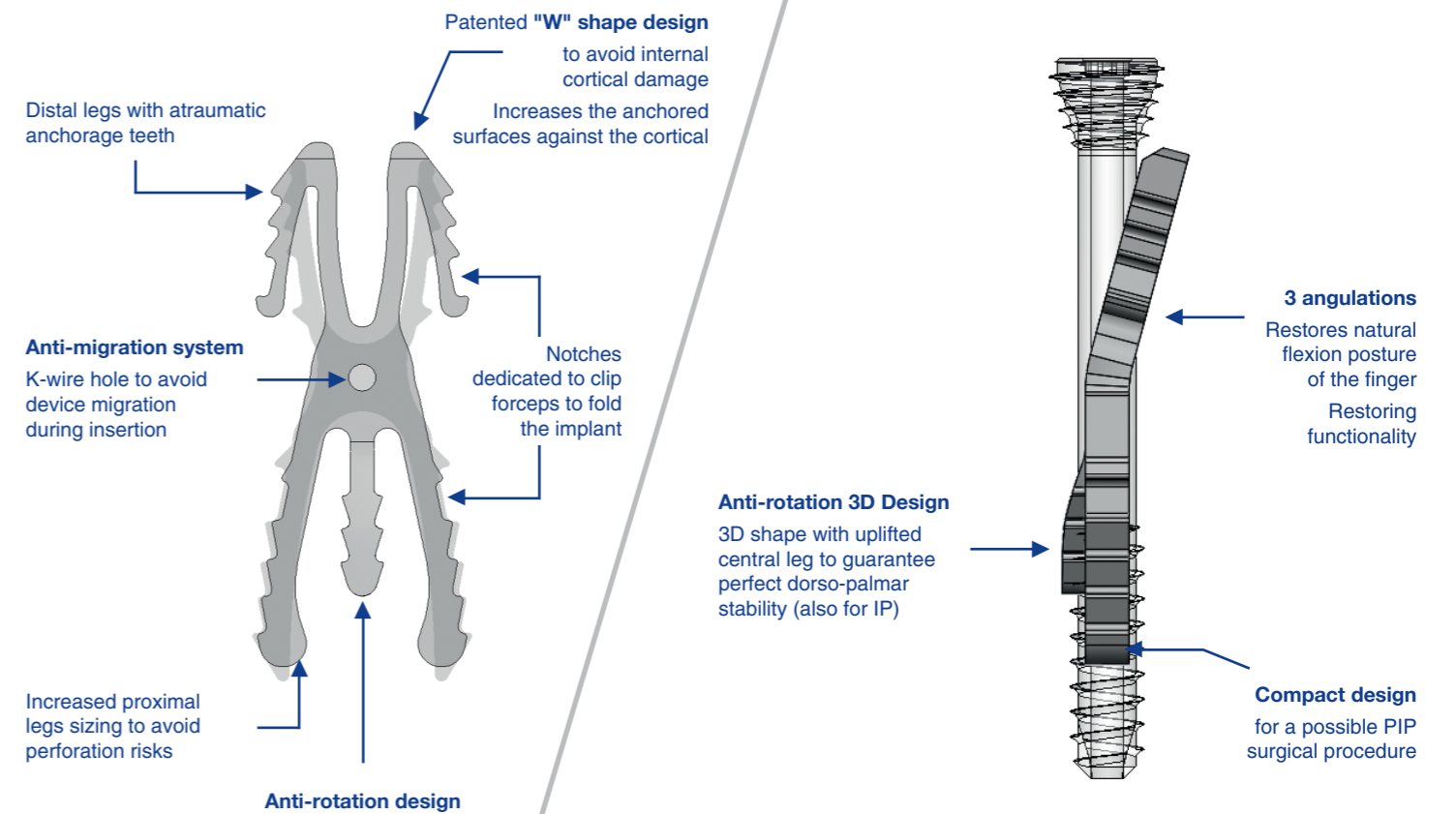


KeriFuse® vs X-Fuse

+ KeriFuse®
Perfectly designed for IP thumb fusion

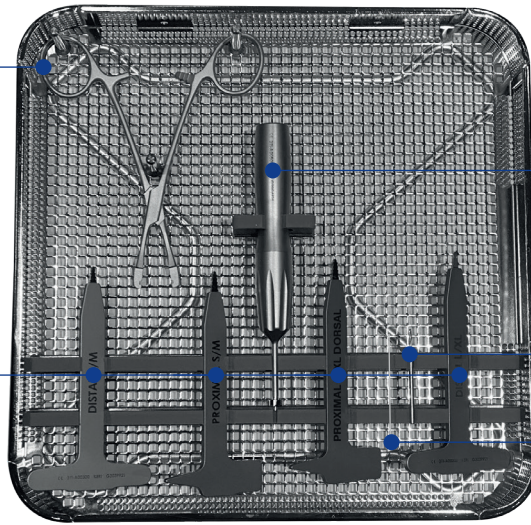
KeriFuse® vs Compression screw

+ KeriFuse®
• Angulations 0°/15°/25°
• No pulp approach/incision



+ Forceps

+ Set of 4 rasps
 • 1 proximal and 1 distal S/M
 • 1 proximal and 1 distal L/XL



+ Monobloc manual reamer

+ Conical drill \varnothing 2mm

+ K-wire \varnothing 0,6 x 60 mm

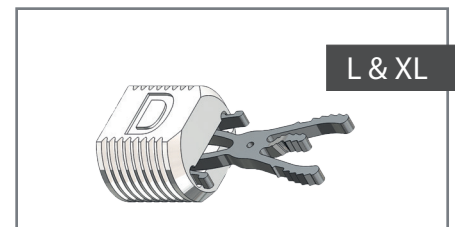
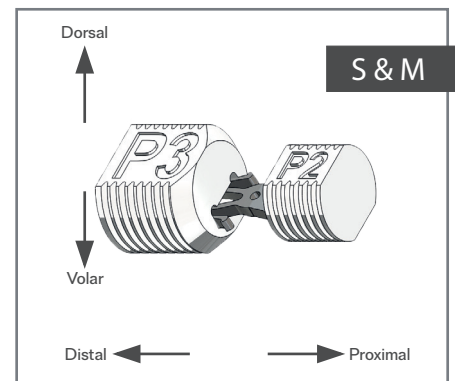
ORDERING INFORMATION

DIP / IP Implants

Catalog	Reference	Designation
	Intramedullary Arthrodesis Implant - Small 0°	310-P20200
	Intramedullary Arthrodesis Implant - Small 15°	310-P20215
	Intramedullary Arthrodesis Implant - Small 25°	310-P20225
	Intramedullary Arthrodesis Implant - Medium 0°	310-P10100
	Intramedullary Arthrodesis Implant - Medium 15°	310-P10115
	Intramedullary Arthrodesis Implant - Medium 25°	310-P10125
	Intramedullary Arthrodesis Implant - Large 0°	310-P30300
	Intramedullary Arthrodesis Implant - Large 15°	310-P30315
	Intramedullary Arthrodesis Implant - Large 25°	310-P30325
	Intramedullary Arthrodesis Implant - Extra Large 0°	310-P40400
	Intramedullary Arthrodesis Implant - Extra Large 15°	310-P40415
	Intramedullary Arthrodesis Implant - Extra Large 25°	310-P40425

* Size to be selected according to IP thumb characteristic

- + Sterile
- + Ready-to-use



KeriMedical SA
Switzerland (Headquarters)
 Route des Acacias, 45a
 1227 Geneva - Switzerland
 Tél: +41 58 255 01 30
 Fax: +41 58 255 01 40
 customerservice@kerimedical.com

KeriMedical SAS
France
 ActiPro - 219 rue Laszlo Biro
 74160 Archamps - France
 Tél: +33(0)4 50 85 36 10
 Fax: +33 (0)4 80 16 05 10
 adv@kerimedical.com

Distributed by :

